

ILLUSTRATED MEMBRANE INSTALLATION

National Applied Construction Products, Inc. • 800.633.4622 • Fax: 330.644.3557 • www.NACproducts.com

IMPORTANT: This is not a stand alone document and does not include complete crack isolation, waterproofing or sound abatement instructions. Refer to ECB, Strataflex, SAM³ and Super SAM Install Sheets for complete instructions.

1

- Begin with a clean, dry floor.
- Apply 101 Floor Prep to porous floors. Allow to cure.

2

- Measure and pre-cut membrane 4-6" longer than required.
- Butt joint ECB, SAM³ or Super SAM 125 side seams. Overlap Strataflex side seams at 2" double-stick edge.
- Re-roll membrane to half the room's depth.

3

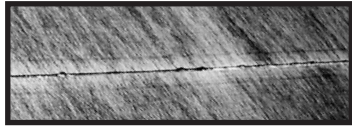
- Apply Primer to substrate. Prime only an area that will be covered by membrane within four hours.

4

- Slit release paper. Membrane will roll out across primed floor.

5

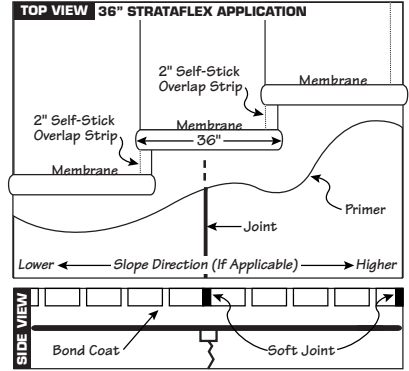
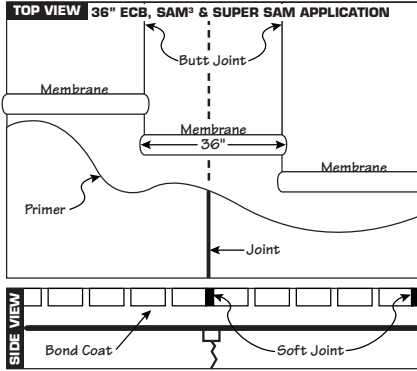
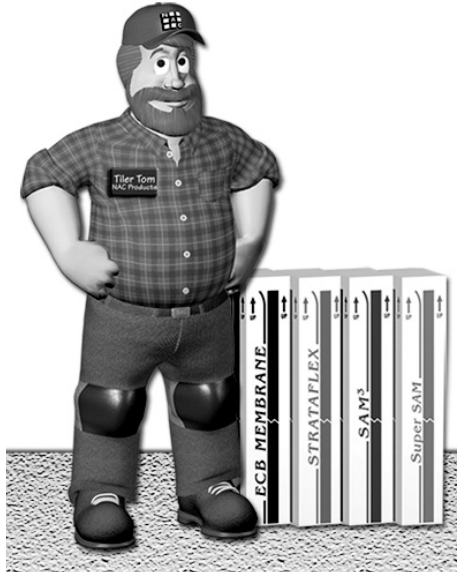
- Press membrane into place with flat side of trowel or 75-100# roller. Pay extra attention to Strataflex side seams.



BUTT JOINT: ECB, SAM³ or Super SAM side seams and ECB, Strataflex, SAM³ or Super SAM end seams.



OVERLAP: Strataflex side seams. Remove film from 2" double-stick edge on underlying sheet and carefully press into place.



Products and specifications subject to change without notice. Refer to current TCA Handbook for additional guidelines.